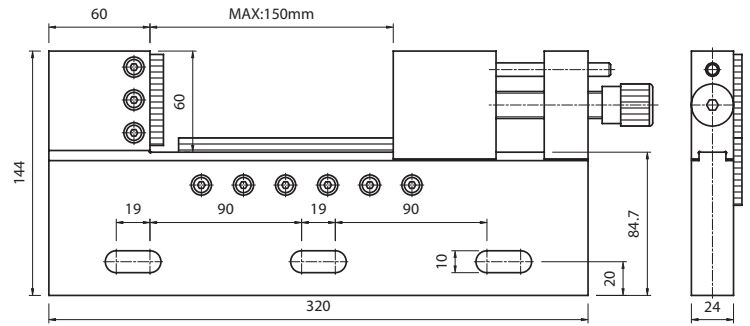
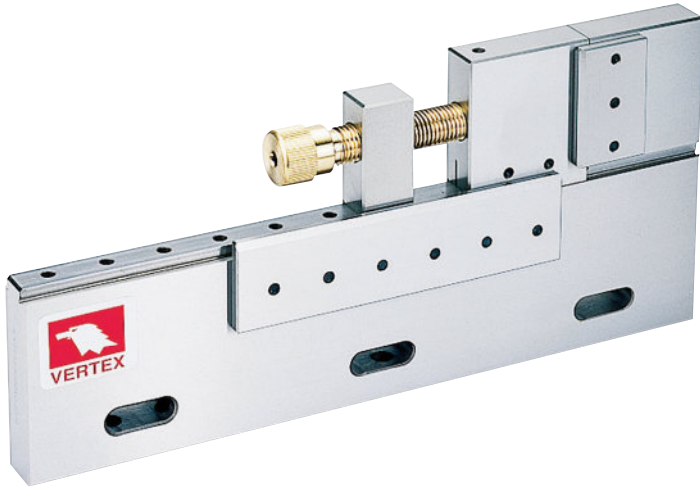




# EDM Tool Marker Vise (STAINLESS)



# VERTEX®



- Do not over lock.
- ※ Not 100% magnetic proof

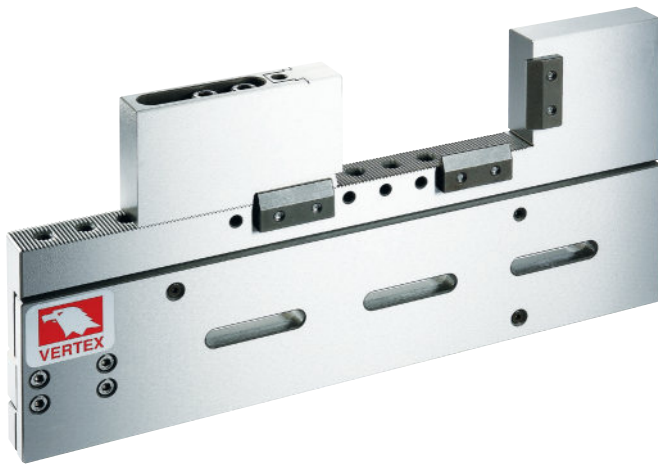
<b>PARALLELISM</b>	±0.002 mm / 100 mm	
<b>SQUARENESS</b>	±0.002 mm / 100 mm	
<b>ORDER NO.</b>	<b>WEIGHT (kgs)</b>	<b>CODE NO.</b>
VSTV-150W	6.75	2008-060

<b>MAX.OPENING</b>	150 mm
<b>THICKNESS</b>	24 mm
<b>JAW DEEP</b>	60 mm
<b>N.W</b>	6.75 kgs
<b>MATERIAL</b>	SUS420
<b>HARDNESS</b>	HRC 54°±2°

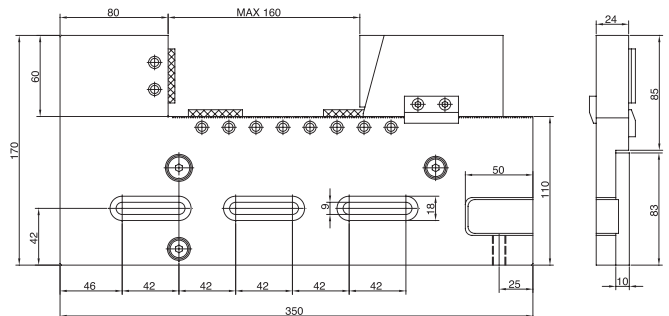
EDM TOOL MARKER VISE



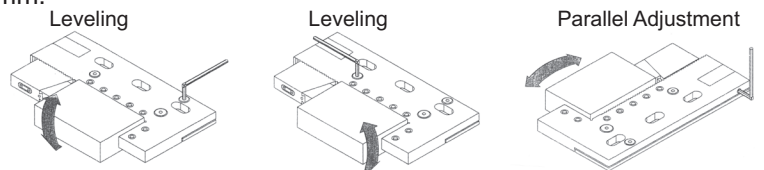
# EDM Tool Maker Vise (STAINLESS)



- Over lock may break vise.
- ※ Not 100% magnetic proof



- Parallelism: 0.003 / 100 mm, Squareness: 0.005 / 100 mm.
- Hardness: up to HRC 45°~55°.
- The vise can be adjusted up and down, left and right, forth and back to set parallelism.
- High water pressure resistance.



<b>PARALLELISM</b>	±0.003 mm / 100 mm	
<b>SQUARENESS</b>	±0.005 mm / 100 mm	
<b>ORDER NO.</b>	<b>WEIGHT (kgs)</b>	<b>CODE NO.</b>
VSTV-320W	8	2008-090

<b>MAX.OPENING</b>	160 mm
<b>THICKNESS</b>	24 mm
<b>JAW DEEP</b>	60 mm
<b>N.W</b>	8 kgs
<b>MATERIAL</b>	STAVAX
<b>HARDNESS</b>	HRC 52°±2°



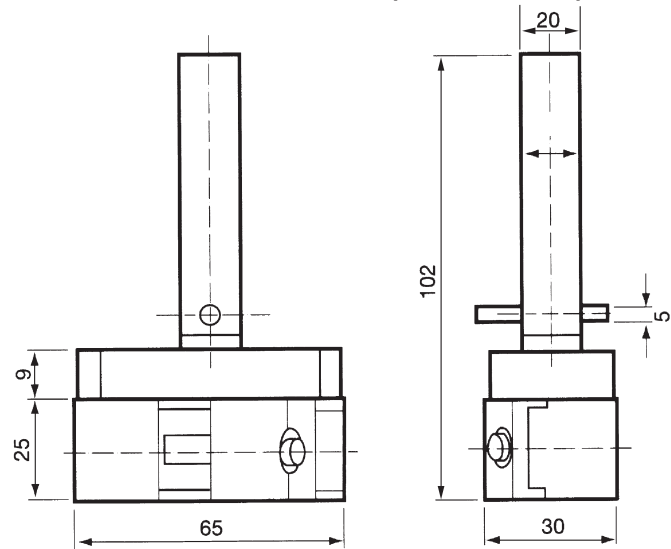
# Electro Vise (STAINLESS)

**VERTEX®****(STAINLESS)FOR EDM**

MINI TYPE

JAW OPENING 20mm

JAW WIDTH 25mm



※ Not 100% magnetic proof

Material	SUS440
Parallelism	within 0.003 mm / 100 mm
Squareness	within 0.005 mm / 100 mm
Harden treatment	up to HRC 58°

ORDER NO.	MATERIAL	LENGHT	WIDTH	JAW OPENING	JAW HEIGHT	HARDEN	WEIGHT (kgs)	CODE NO.
VEH-20MS	SUS440	65	25	20	10	HRC 58°	0.7	2008-020

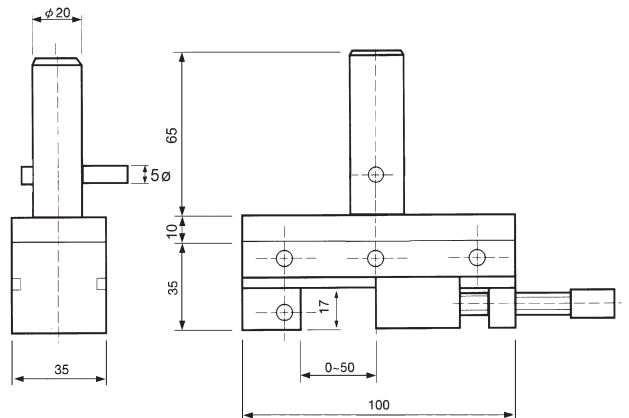


# Electro Vise (STAINLESS)

**(STAINLESS)FOR EDM**

JAW WIDTH 35mm

JAW OPENING 50mm



※ Not 100% magnetic proof

Material	SUS440
Parallelism	within 0.003 mm / 100 mm
Squareness	within 0.005 mm / 100 mm
Harden treatment	up to HRC 58°

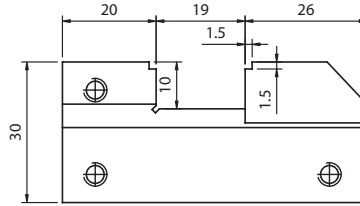
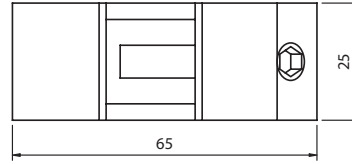
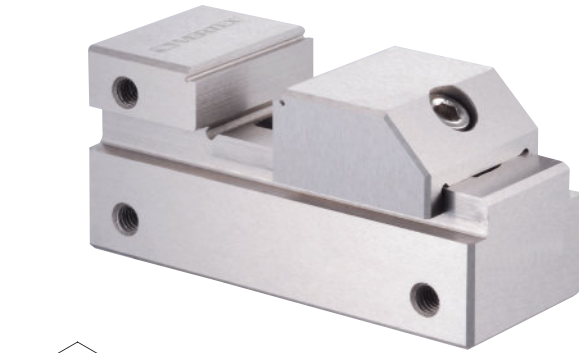
ORDER NO.	MATERIAL	LENGHT	WIDTH	JAW OPENING	JAW HEIGHT	HARDEN	WEIGHT (kgs)	CODE NO.
VEH-20DS	SUS440	100	35	50	17	HRC 58°	1.3	2008-030



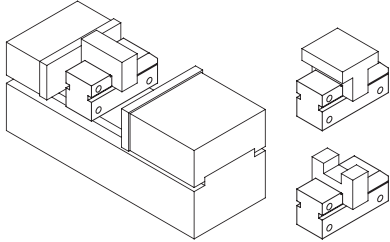
# Tool Maker Vise (STAINLESS)



**VERTEX**<sup>®</sup>  
MINI TYPE FOR EDM



Tool makers vise of mini type which can be put in a bigger vise to process the small and precise workpiece. Also it can be used in an E.D.M. machine and grinding machine.  
Squareness and parallelism: within  $\pm 0.003 / 100$  mm  
※ Not 100% magnetic proof



ORDER NO.	MATERIAL	LENGHT	WIDTH	JAW OPENING	JAW HEIGHT	HARDEN	WEIGHT (kgs)	CODE NO.
VSTV-10V	SUS 440	65	25	19	10	HRC 56°-58°	0.3	2008-070

TOOL MAKER VISE

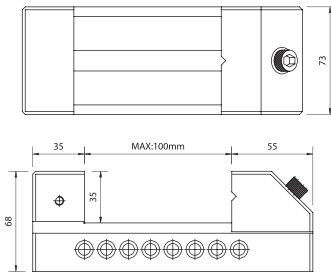
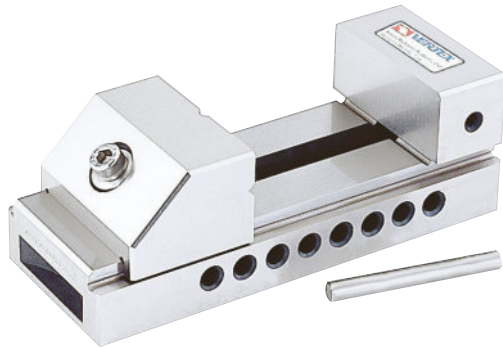


# Tool Maker Vise (STAINLESS)

ORDER NO.	WEIGHT (kgs)	CODE NO.
VBST-30	4.5	2008-075

Material: SUS 440  
Hardness: HRC 58°~60°  
Squareness: Within 0.005 / 100 mm  
※ Not 100% magnetic proof

MINI TYPE FOR EDM  
Unit:mm

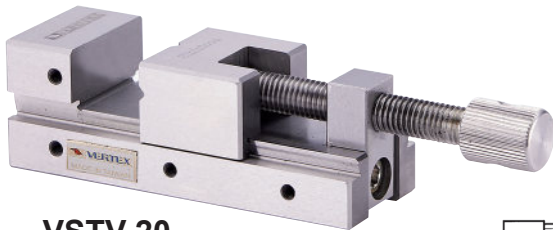


TOLERANCE	
A	$\pm 0.004$ mm
B	$\pm 0.005$ mm
C	$\pm 0.005$ mm
D	$\pm 0.005$ mm
E	$\pm 0.005$ mm
F	$\pm 0.005$ mm
G	$\pm 0.005$ mm

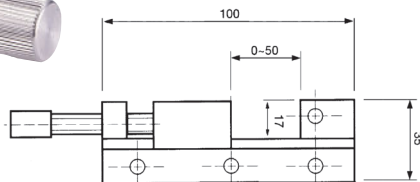


# Tool Maker Vise (STAINLESS)

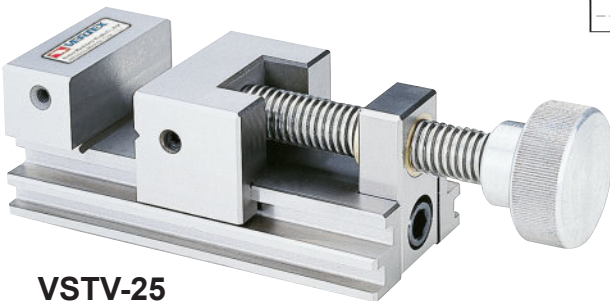
FOR EDM



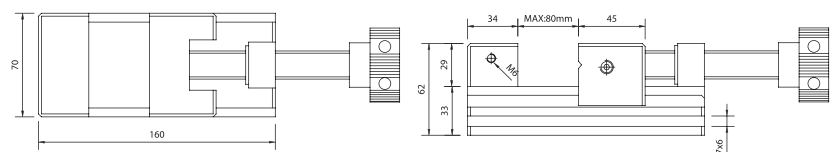
VSTV-20



- Material: SUS 440
  - Hardness: HRC 56°
  - Squareness: Within 0.005 / 100 mm
  - It was made by tool steel of stainless steel system and was precision ground after hardened by heat treatment. So, it will not be rusted even permeation.
  - The vise can clamp workpiece by moveable Jaw without lifting. It is easier and convenient for processing small workpieces.
- ※ Not 100% magnetic proof



VSTV-25



ORDER NO.	MATERIAL	LENGHT	HEIGHT	JAW OPENIG	JAW WIDTH	JAW HEIGHT	HARDEN	WEIGHT (kgs)	CODE NO.
VSTV-20	SUS440	100	35	50	35	17	HRC56°	1.2	2008-079
VSTV-25		160	62	80	70	29		4.4	2008-080

# Electrode Vise

MINI TYPE  
JAW WIDTH 25mm



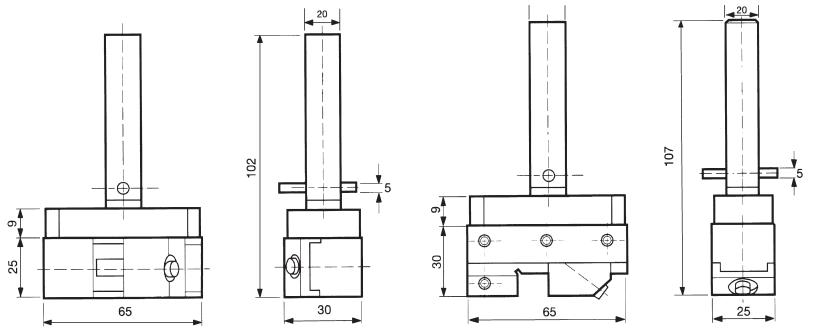
## ELECTRODE HOLDERS FOR ELECTRO DISCHARGE MACHINE

Mini vise can be used in fixed electrode holders.

The opening with a cross V groove on the vise can do electric discharging both by vertical way and horizontal way for various-shape workieces.

The max. opening on the vise is 20 mm.

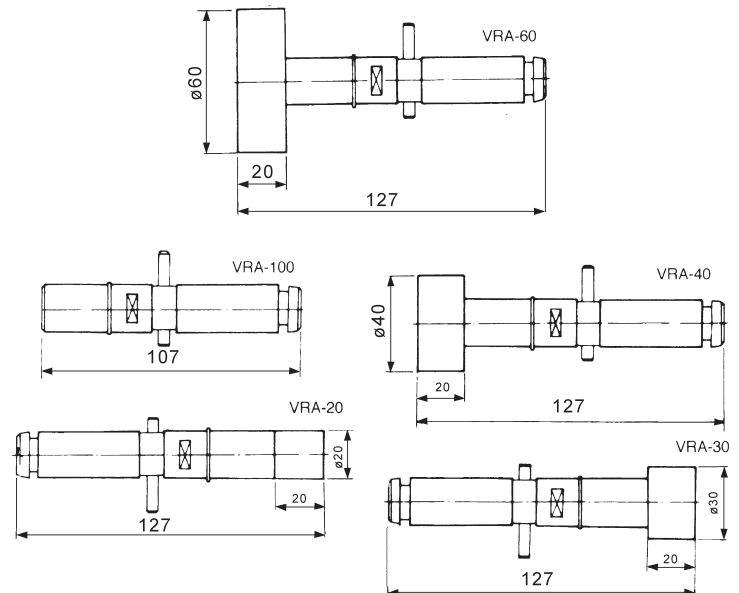
※ Not 100% magnetic proof



ORDER NO.	MATERIAL	LENGHT	WIDTH	JAW OPENING	JAW HEIGHT	HARDEN	WEIGHT (kgs)	CODE NO.
VEH-20	SKS	65	25	20	10	HRC 58°-60°	0.8	2008-001

# Electrode Holder

FOR EDM



ORDER NO.	VRA-20	VRA-30	VRA-40	VRA-60	VRA-100
WEIGHT(KG)	0.2	0.4	0.5	0.9	0.3
CODE NO.	2008-010	2008-011	2008-012	2008-013	2008-014



## FEATURES

### CHEMICAL COMPOSITION

65/35 brass equivalent to Alloy No. JIS-H3260 C2700

### NO ACID-CORROSION AND NO DAMAGE TO RESINS

The special treatment avoids acid-corrosion on machine and workpiece.

### HIGH SURFACE QUALITY

The special treatment makes the wire surface smooth, free from dirt, rust and grease that causes unefficiency to electric discharge.

### STANDARD WEIGHT CONTROL

By perfect control in process, we obtain the standard weight per coil that enables us to maintain the stability of processing time and the accuracy of drawing.

### NO WELDMENT

The rough surface caused by welding could affect the quality and accuracy of performance. The welded wire tends to break that wastes the time to re-thread.

### HIGH-DIMENSIONAL PRECISION

Wire diameter tolerance and roundness tolerance are both limited to  $1/\mu\text{m}$ .

### OUTSTANDING STRAIGHTNESS

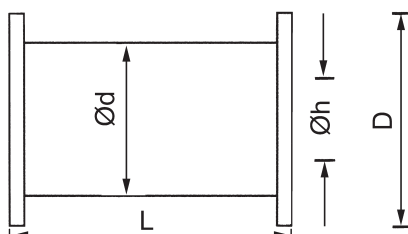
Outstanding straightness ensures automatic threading successfully.

※FLOATING PRICE, CONTACT US BEFORE ORDERING.

## SPECIFICATION

ORDER NO.	WIRE TYPE	DIAMETER		DIAMETER TOLERANCE (mm)	BREAKING LOAD (kgs)	TENSILE STRENGTH (N/mm)	ELONGATION (%)	SUITFUL WORKING STYLE	CODE NO.
		inch	mm						
VEW-20H	HARD	0.008	0.20	±0.001	3.14	980 ≒	0.4 ≒	STRAIGHT CUTTING a.PASS CUTTING b.ROUGH CUTTING c.FINISH CUTTING	2009-003
VEW-25H		0.010	0.25		4.92				2009-004
VEW-30H		0.012	0.30		7.07				2009-005
VEW-20S	SOFT	0.008	0.20	±0.001	1.41	441 ≒	15 ≒	ANGLE CUTTING	2009-010
VEW-25S		0.010	0.25		2.21				2009-011
VEW-30S		0.012	0.30		3.18				2009-012

THE PACKIING USED A STANDARD COIL.  
HERE THE POPULAR IS P-5R (5kgs).

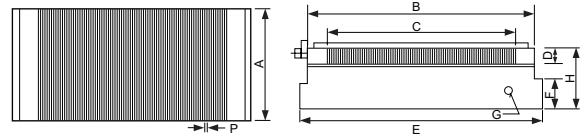


PACKING COIL TYPE	COIL SHAPE	WIGHT OF WIRE ON COIL (kg)	DIAME-THE OF WIRE (mm)	D (mm)	d (mm)	L (mm)	h (mm)	LENGTH OF WIRE ON COIL (M)	NUMBER OF COILS /BOX
P-5R		5	0.20 0.25 0.30 0.33	160	90	114	20	18314 11553 8001 6750	4



# Middle Pitch Permanent Magnetic Chuck

**MAGNETIC FORCE 19KGF  
680 GAUSS**



## APPLICATION

New type of thin chuck, in 50mm thickness, for grinding and electrodischarging works, for thin plate or small works, in wide range of applications, it features a wide effective magnetic area on the chucking face.

## FEATURES

- Thin and light to meet versatile applications.
- Fine-pitched magnetic poles, on this model, make it ideally suitable for small and thin works.
- Hexagonal wrench key is used for the magnetic ON/OFF change over handle it is inserted through the side easily removed and operates quite lightly.
- The chuck surface has a wider effective magnetic area than other chucks of similar type.

Unit:mm

ORDER NO.	DIMENSION	CHUCKING SIZE				POLE PITCH	CHUCK MOUNTING FACE			HEIGHT	HEXAGONAL HANDLE HOLE	WEIGHT KGS	CODE NO.
		A	B	C	D		A	E	F				
VGF-1018B	100X175	100	175	146	18	5(1+4)	100	195	15	50	8	7.7	2015-160
VGF-1515B	150X150	150	150	116	18	5(1+4)	150	175	15	50	8	10	2015-161
VGF-1530B	150X300	150	300	256	18	5(1+4)	150	320	15	50	8	18.8	2015-162
VGF-1535B	150X350	150	350	306	18	5(1+4)	150	370	15	50	8	21.6	2015-163
VGF-1545B	150X450	150	450	406	18	5(1+4)	150	470	15	50	8	27.4	2015-164
VGF-2040B	200X400	200	400	356	18	5(1+4)	200	420	15	50	8	32.3	2015-165
VGF-2045B	200X450	200	450	406	18	5(1+4)	200	470	15	50	8	36.3	2015-166
VGF-1018BS	100X175	100	175	146	18	5(1+4)	100	175	15	50	8	8	2015-167
VGF-1515BS	150X150	150	150	121	18	5(1+4)	150	150	15	50	8	9	2015-168
VGF-1530BS	150X300	150	300	256	18	5(1+4)	150	300	15	50	8	20	2015-169



# Precision Compact MC Vise

**PATENT** New Design For Hydro Booster  
1 Year Guarantee



for machining center

HYDRO & MECHANICAL TYPE  
GREAT SMOOTH OPERATION  
SAME HEIGHT GUARANTEE

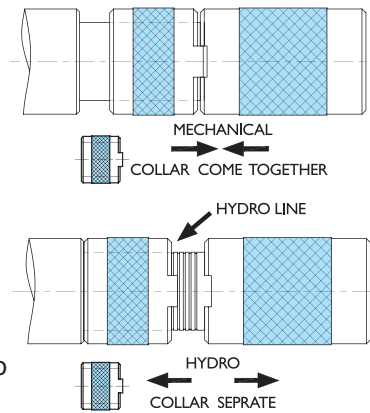
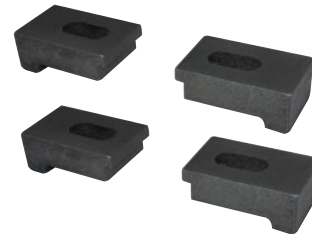


FOR THIN WORKPIECE



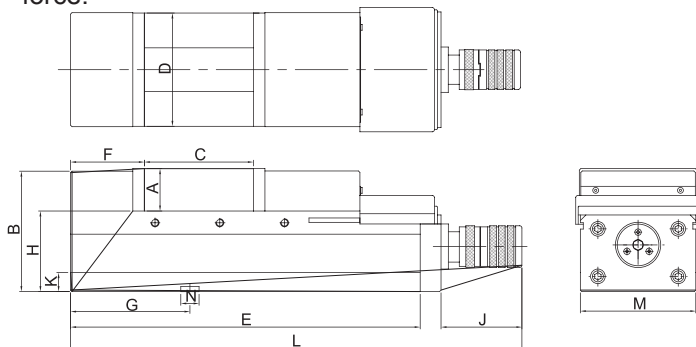
HYDRO BOOSTER

HYDRO LINE



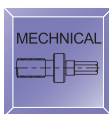
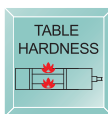
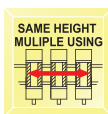
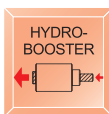
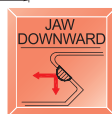
## Features

- FCD 60 with 60kgs/mm<sup>2</sup> or 80,000 psi high quality ductile cast iron - body material - reduce the cutting vibration.
- Angle-fixed design : for vertical & horizontal cutting & processing machine.
- Everlasting clamping power : choices of 2 - Hydro & MC.
- Hydro : move the handle ring to word vise.
- Mechanical : move the handle ring toward the hex. hole.
- Heavy cutting.
- Hardness > HRC 45° : vise sliding bed.
- High durebility & high precision.
- Tolerance : 0.01/100mm
- Lift proof : press down design.
- Bending resistance : rigid & strong.
- Dust proof : concealed spindle.
- Fast & easy operation.
- Hydro line - one scale indicate about 1/3 of the max. clamp force.



## INSPECTION SPECIFICATION

NO.	Inspection Item	Per (100mm)	Guaranteed
1	Parallelism: running face to bottom of bed.		0.01/100mm
2	Squareness :between running face and jaw plate.		0.02/100mm
3	Squareness: keway on bottom of bed to jaw plate.		0.02/100mm
4	Parallelism: running face of the test block to bottom of bed.		0.02/100mm



## Hydraulic Type

ORDER NO.	A	B	C OPEN	D	E	F	G	H	J	K	L	M	N	Clamping Force (kgf)	Weight Body	CODE NO.
VMC-100HV	48	130	125	100	340	80	125	85	110	15	470	101	16	3000	27 kgs	4005-060
VMC-130HV	55	147	180	130	405	85	150	95	110	21	535	131	18	4000	40 kgs	4005-061
VMC-160HV	58	168	240	160	495	100	165	105	110	21	625	161	18	5000	58 kgs	4005-062
VMC-200HV	61	170	280	200	570	108	190	110	110	21	700	201	18	6000	87 kgs	4005-063



# ER Spring Collet Chuck System



**VERTEX**

Collet Holders With BT Taper Shank  
(For CNC Machine Center)  
ER-32 ER-40

MAS403 BT-SHANK

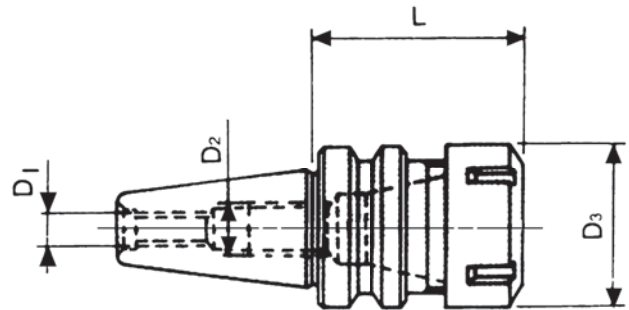


BT-40-ER32



BT-40-ER20M

ACCURACY  
RUNOUT 0.005m/m  
TAPER SHANK AT-3  
R.P.M. 7000



ORDER NO.	TAPER	COLLET TYPE	D1	D2	D3	L	KGS	CODE NO.	
V-700	BT30	ER32	M12	M12X1.75P	50	60	0.7	3031-303	
V-703A	BT40	ER32	M16X2.0P	M22X1.5P	50	70	1.4	3032-305	
V-703B		ER32	M16X2.0P	M22X1.5P	50	100	1.7	3032-306	
V-704		ER40	M16X2.0P	M22X1.5P	63	80	1.7	3032-307	
V-704B		ER40	M16X2.0P	M22X1.5P	63	100	2	3032-421	
V-705		BT50	ER32	M24X3.0P	M28X1.5P	50	100	4.5	3033-305
V-706	ER40		M24X3.0P	M28X1.5P	63	100	4.6	3033-306	
V-706B	ER40		M24X3.0P	M28X1.5P	63	150	5.7	3033-307	
V-707	ER50		M24X3.0P	M36X1.5P	78	100	5.1	3033-308	
V-710	BT30	ER11	M12	M12X1.75P	19	60	0.5	3033-311	
V-711		ER11	M12	M12X1.75P	19	100	0.6	3033-312	
V-712		ER11M	M12	M12X1.75P	16	100	0.9	3033-313	
V-713		ER16	M12	M12X1.75P	28	100	0.8	3033-314	
V-714		ER16M	M12	M12X1.75P	22	100	0.7	3033-315	
V-715		ER20	M12	M12X1.75P	34	60	0.6	3033-316	
V-716		ER20	M12	M12X1.75P	34	100	0.9	3033-317	
V-717		ER20M	M12	M12X1.75P	28	100	0.9	3033-318	
V-718		ER25	M12	M12X1.75P	42	60	0.7	3033-319	
V-719		ER40	M12	M12X1.75P	63	70	1	3033-320	
V-720		BT40	ER11	M16	M22X11.5P	19	70	1.2	3033-321
V-721			ER11	M16	M22X11.5P	19	100	1.5	3033-322
V-722A			ER11M	M16	M22X11.5P	16	100	1.2	3033-323
V-723A	ER16M		M16	M22X11.5P	22	100	1.3	3033-324	
V-723B	ER16M		M16	M22X11.5P	22	150	1.5	3033-330	
V-724A	ER20M		M16	M22X11.5P	28	100	1.6	3033-325	
V-724B	ER20M		M16	M22X11.5P	28	150	1.6	3033-331	
V-725	ER25		M16	M22X11.5P	42	70	1.3	3033-326	
V-726	ER25		M16	M22X11.5P	42	100	1.6	3033-327	
V-727	ER50		M16	M22X11.5P	78	90	2.2	3033-328	



# C-20,25,32,42 Collet

## C-TYPE COLLET



### 20, 25, 32, 42 STRAIGHT COLLET

METRIC



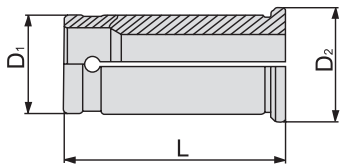
ORDER NO.	COLLET	COLLETS SIZE d INSIDE DIAMETER	D1 O.D.	D2	L	PCS/SET	CODE NO.
C-20-6P	C-20	4, 6, 8, 10, 12, 16	20	25	52	6	3202-180
C-25-7P	C-25	4, 6, 8, 10, 12, 16, 20	25	31	60	7	3202-181
C-32-7P	C-32	6, 8, 10, 12, 16, 20, 25	32	37	73	7	3202-182
C-42-8P	C-42	6, 8, 10, 12, 16, 20, 25, 32	42	48	80	8	3202-183

### 20, 25, 32, 42 STRAIGHT COLLET

INCH



ORDER NO.	COLLET	COLLETS SIZE d INSIDE DIAMETER	D1 O.D.	D2	L	PCS/SET	CODE NO.
C-20-6I	C-20	1/4", 5/16", 3/8", 1/2", 5/8", 3/16"	20	25	52	6	3202-184
C-25-7I	C-25	1/4", 5/16", 3/8", 1/2", 5/8", 3/16", 3/4"	25	31	60	7	3202-185
C-32-7I	C-32	1/4", 5/16", 3/8", 1/2", 5/8", 3/4", 1"	32	37	73	7	3202-186
C-42-8I	C-42	1/4", 5/16", 3/8", 1/2", 5/8", 3/4", 1", 1 1/4"	42	48	80	8	3202-187



METRIC

ORDER NO.	d	CODE NO.
C-20-4	4	3202-200
C-20-6	6	3202-201
C-20-8	8	3202-202
C-20-10	10	3202-203
C-20-12	12	3202-204
C-20-16	16	3202-205
C-25-4	4	3202-229
C-25-6	6	3202-230
C-25-8	8	3202-231
C-25-10	10	3202-232
C-25-12	12	3202-233
C-25-16	16	3202-234
C-25-20	20	3202-235
C-32-6	6	3202-250
C-32-8	8	3202-251
C-32-10	10	3202-252
C-32-12	12	3202-253
C-32-16	16	3202-254
C-32-20	20	3202-255
C-32-25	25	3202-256
C-42-6	6	3202-280
C-42-8	8	3202-281
C-42-10	10	3202-282
C-42-12	12	3202-283
C-42-16	16	3202-284
C-42-20	20	3202-285
C-42-25	25	3202-286
C-42-32	32	3202-287

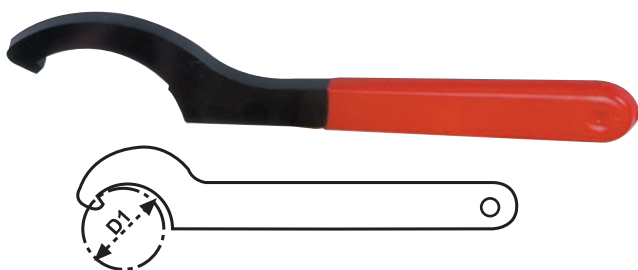
INCH

ORDER NO.	d	CODE NO.
C-20-3/16"	3/16"	3202-210
C-20-1/4"	1/4"	3202-211
C-20-5/16"	5/16"	3202-212
C-20-3/8"	3/8"	3202-213
C-20-1/2"	1/2"	3202-214
C-20-5/8"	5/8"	3202-215
C-25-3/16"	3/16"	3202-240
C-25-1/4"	1/4"	3202-241
C-25-5/16"	5/16"	3202-242
C-25-3/8"	3/8"	3202-243
C-25-1/2"	1/2"	3202-244
C-25-5/8"	5/8"	3202-245
C-25-3/4"	3/4"	3202-246
C-32-3/16"	3/16"	3202-260
C-32-1/4"	1/4"	3202-261
C-32-5/16"	5/16"	3202-262
C-32-3/8"	3/8"	3202-263
C-32-1/2"	1/2"	3202-264
C-32-5/8"	5/8"	3202-265
C-32-3/4"	3/4"	3202-266
C-32-7/8"	7/8"	3202-267
C-32-1"	1"	3202-268
C-42-1/4"	1/4"	3202-290
C-42-5/16"	5/16"	3202-291
C-42-3/8"	3/8"	3202-292
C-42-1/2"	1/2"	3202-293
C-42-5/8"	5/8"	3202-294
C-42-3/4"	3/4"	3202-295
C-42-7/8"	7/8"	3202-296
C-42-1"	1"	3202-297
C-42-1 1/4"	1 1/4"	3202-298

ORDER NO.	WEIGHT
C-20	0.1
C-25	0.18
C-32	0.22
C-42	0.35



# C-20,25,32,42 Wrenchs



ORDER NO.	L	D	WEIGHT KGS	COLLETS	CODE NO.
C-20W	227	52	0.22	C-20	3202-311
C-25W	227	58	0.22	C-25	3202-312
C-32W	260	75	0.33	C-32	3202-313
C-42W	270	87	0.35	C42	3202-314



### Collet Chuck Kit With Straight Shank

Including shank, full set of collets, wrench and case.

### COLLET CHUCK SETS

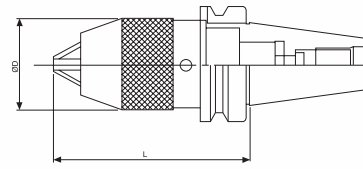
ORDER NO.	SHANK D1XL1	COLLET TYPE	SET RANGE	SET PCS	KGS	CODE NO.
V-601	Ø20X50L	ER16	1-10	10	0.9	3003-401
V-602	Ø20X50L		3-10	8	0.8	3003-402
V-603	Ø20X100L		1-10	10	1	3003-403
V-604	Ø20X100L		3-10	8	0.9	3003-404
V-605	Ø20X150L		1-10	10	1.1	3003-405
V-606	Ø20X150L		3-10	8	0.5	3003-406
V-607	Ø25X100L		1-10	10	1.1	3003-407
V-607A	Ø25X50L		1-10	10	1.1	3003-411
V-608	Ø25X100L		3-10	8	1.1	3003-408
V-608A	Ø25X50L		3-10	8	1.1	3003-412
V-609	Ø25X150L	1-10	10	1.3	3003-409	
V-610	Ø25X150L	3-10	8	1.3	3003-410	
V-611	Ø20X50L	ER20	2-13	12	1.2	3004-401
V-612	Ø20X50L		4-13	10	1.2	3004-402
V-613	Ø20X100L		2-13	12	1.2	3004-403
V-614	Ø20X100L		4-13	10	1.2	3004-404
V-615	Ø20X150L		2-13	12	1.4	3004-405
V-615A	Ø25X50L		2-13	12	1.3	3004-409
V-616	Ø20X150L		4-13	10	1.3	3004-406
V-616A	Ø25X50L		4-13	10	1.3	3004-410
V-617	Ø25X100L		2-13	12	1.4	3004-407
V-617A	Ø25X150L		2-13	12	1.5	3004-411
V-618	Ø25X100L	4-13	10	1.4	3004-408	
V-618A	Ø25X150L	4-13	10	1.5	3004-412	
V-619	Ø20X50L	ER25	2-16	15	2.2	3005-401
V-621	Ø20X50L		4-16	7	1.7	3005-403
V-622	Ø20X100L		2-16	15	2.3	3005-404
V-624	Ø20X100L		4-16	7	1.8	3005-406
V-625	Ø20X150L		2-16	15	2.4	3005-407
V-627	Ø20X150L		4-16	7	2	3005-409
V-628	Ø25X100L		2-16	15	2.3	3005-410

ORDER NO.	SHANK D1XL1	COLLET TYPE	SET RANGE	SET PCS	KGS	CODE NO.
V-681	Ø16X50L	ER11	1-7	13	0.5	3002-401
V-682	Ø16X50L		1-7	7	0.5	3002-402
V-683	Ø16X100L		1-7	13	0.6	3002-403
V-684	Ø16X100L		1-7	7	0.5	3002-404

ORDER NO.	SHANK D1XL1	COLLET TYPE	SET RANGE	SET PCS	KGS	CODE NO.
V-630	Ø25X100L	ER25	6-16	7	2	3005-412
V-631	Ø25X150L		2-16	15	2.6	3005-413
V-633	Ø25X150L		6-16	7	1.9	3005-415
V-634	Ø32X60L		2-16	15	2.5	3005-416
V-636	Ø32X60L	ER32	6-16	7	1.9	3005-418
V-637	Ø25X80L		3-20	18	4.1	3006-401
V-638	Ø25X80L		4-20	11	3	3006-402
V-639	Ø25X80L		3-20	6	2.7	3006-403
V-640	Ø32X100L		4-20	18	4.3	3006-404
V-641	Ø32X100L		6-20	11	3.2	3006-405
V-642	Ø32X100L		6-20	6	2.9	3006-406
V-643	Ø40X100L		3-20	18	4.6	3006-407
V-644	Ø40X100L		4-20	11	3.5	3006-408
V-645	Ø40X100L		6-20	6	3.2	3006-409
V-646	Ø1"X3L	ER40	3-20	18	4.1	3006-410
V-647	Ø1"X3L		4-20	11	3	3006-411
V-648	Ø1"X3L		6-20	6	2.9	3006-412
V-658	Ø32X100L		4-26	23	7.3	3007-404
V-659	Ø32X100L		4-26	15	6.1	3007-405
V-660	Ø32X100L		6-25	7	4.6	3007-406
V-661	Ø40X100L		4-26	23	7.6	3007-407
V-662	Ø40X100L		4-26	15	6.5	3007-408
V-663	Ø40X100L		6-25	7	5	3007-409

- V-603, V-604 are the most popular item.
- THE ER-20/25/32/40 ARE TO BE CONTINUED
- V-613, V-614 are the most popular item.

# Drill Chuck Holder/APU

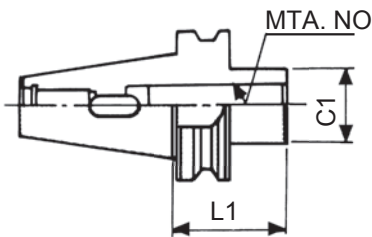


ORDER NO.	TAPER	ØD	KGS	CODE NO.
BT-180	BT30-APU08	37	1	3212-301
BT-181	BT30-APU13	50	1.4	3212-302
BT-182	BT40-APU08	37	1.5	3212-303
BT-183	BT40-APU13	50	2	3212-304
BT-184	BT40-APU16	58	2.5	3212-305
BT-186	BT50-APU13	50	4.7	3212-307
BT-188	BT50-APU16	58	4.8	3212-309

# Morse Taper Adaptor

BT30,40,50-MTA,MTB

MAS 403 BT-SHANK



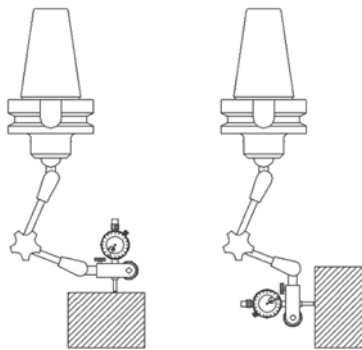
## MTA TYPE (STANDARD TYPE)

ORDER NO.	TAPER	MT.NO.	L1	C1	WEIGHT(KG)	CODE NO.
BT-204	BT30	MT-2	60	32	0.6	3211-091
BT-207	BT30	MT-3	80	40	1.2	3211-092
BT-209	BT40	MT-1	50	25	1.1	3211-094
BT-212	BT40	MT-2	50	32	1.1	3211-095
BT-215	BT40	MT-3	75	40	1.3	3211-096
BT-218	BT40	MT-4	95	50	1.5	3211-097
BT-220	BT50	MT-1	45	25	3.5	3211-098
BT-223	BT50	MT-2	50	32	3.5	3211-099
BT-226	BT50	MT-3	65	40	3.6	3211-100
BT-229	BT50	MT-4	75	50	3.6	3211-101
BT-231	BT50	MT-5	105	65	4.2	3211-102

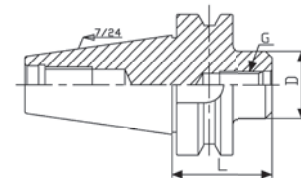
# Lever Checking Holders



M8 THREAD FOR CHECKING ARM



ORDER NO.	L	ØD	G	kgs	CODE NO.
BT40-M8	47	30	M8	1.3	3029-160
BT50-M8	58	30	M8		3029-161



# Test Arbor



ORDER NO.	TAPER	G CAN FOR PULL STUD	A	L	KGS	CODE NO.
A50	BT-50	M24xP3.0	40	250	5.3	3405-412
A40	BT-40	M16xP2.0	40		3.9	3405-413
A30	BT-30	M12xP1.75	30		2.4	3405-414



### Collet Chuck Kit With BT Taper Shank

Including shank, full set of collets, wrench and case.

1. ER16, ER20 PACKED IN WOODEN BOX
2. ER32, ER40, ER50, PACKED IN PLASTIC BOX
3. PACKAGE INCLUDING : CHUCK, COLLET, WRENCH, BOX

**Caution:**

Please notify the taper size, collet type, set range, and set numbers when ordering.

ORDER NO.	BT TAPER	COLLET TYPE	SET RANGE	COLLET PCS	WEIGHT KGS	CODE NO.
V-780	BT30-60L	ER16	1-10	10	1.9	3031-401
V-780A	BT30-100L	ER16	1-10	10	2	3031-406
V-781	BT40-70L	ER16	1-10	10	2.3	3032-401
V-782	BT40-100L	ER16	1-10	10	2.7	3032-402
V-783	BT30-60L	ER20	2-13	12	2.5	3031-402
V-783A	BT30-100L	ER20	2-13	12	2.6	3032-413
V-783B	BT30-60L	ER25	2-16	15	2.5	3032-414
V-783C	BT30-60L	ER25	4-16	7	2.8	3032-415
V-784	BT40-100L	ER20	2-13	12	3	3032-403
V-784A	BT40-70L	ER20	2-13	12	2.8	3032-416
V-784B	BT40-70L	ER25	2-16	15	3.2	3032-417
V-784C	BT40-100L	ER25	4-16	7	3	3032-418
V-785	BT30-60L	ER32	3-20	18	4.4	3031-403
V-786	BT30-60L	ER32	4-20	11	3.8	3031-404
V-787	BT30-60L	ER32	6-20	6	3.4	3031-405
V-788	BT40-70L	ER32	3-20	18	5.2	3032-404
V-789	BT40-70L	ER32	4-20	11	4.2	3032-405
V-790	BT40-70L	ER32	6-20	6	3.8	3032-406
V-791	BT40-100L	ER32	3-20	18	5.7	3032-407
V-792	BT40-100L	ER32	4-20	11	4.7	3032-408
V-793	BT40-100L	ER32	6-20	6	4.3	3032-409
V-794	BT40-80L	ER40	4-26	23	8.9	3032-410
V-795	BT40-80L	ER40	4-26	15	7.6	3032-411
V-796	BT40-80L	ER40	6-25	7	6	3032-412
V-797	BT50-100L	ER40	4-26	23	11.3	3033-401
V-798	BT50-100L	ER40	4-26	15	10	3033-402
V-799	BT50-100L	ER40	6-26	7	8.5	3033-403
V-737	BT50-150L	ER40	4-26	23	12.2	3033-404
V-738	BT50-150L	ER40	4-26	15	11	3033-405
V-739	BT50-150L	ER40	6-26	7	9.5	3033-406
V-740	BT50-100L	ER50	12-34	12	12	3033-407
V-740C	BT40-90L	ER50	12-34	12	9	3033-408
V-740B	BT50-100L	ER32	3-20	18	7.5	3033-409



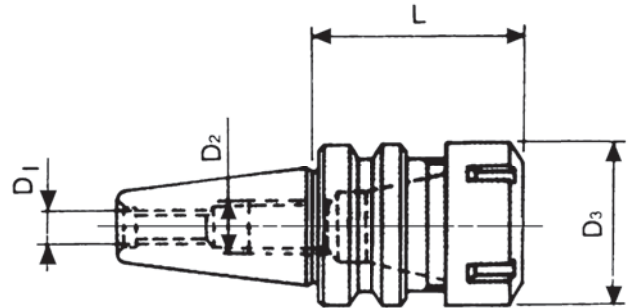
# ER Spring Collet Chuck System

Collet Holders With BT Taper Shank  
(For CNC Machine Center)  
ER-32 ER-40

MAS403 BT-SHANK



ACCURACY  
RUNOUT 0.005m/m  
TAPER SHANK AT-3  
R.P.M. 7000



ORDER NO.	TAPER	COLLET TYPE	D1	D2	D3	L	KGS	CODE NO.	
V-700	BT30	ER32	M12	M12X1.75P	50	60	0.7	3031-303	
V-703A	BT40	ER32	M16X2.0P	M22X1.5P	50	70	1.4	3032-305	
V-703B		ER32	M16X2.0P	M22X1.5P	50	100	1.7	3032-306	
V-704		ER40	M16X2.0P	M22X1.5P	63	80	1.7	3032-307	
V-704B		ER40	M16X2.0P	M22X1.5P	63	100	2	3032-421	
V-705		BT50	ER32	M24X3.0P	M28X1.5P	50	100	4.5	3033-305
V-706	ER40		M24X3.0P	M28X1.5P	63	100	4.6	3033-306	
V-706B	ER40		M24X3.0P	M28X1.5P	63	150	5.7	3033-307	
V-707	ER50		M24X3.0P	M36X1.5P	78	100	5.1	3033-308	
V-710	BT30	ER11	M12	M12X1.75P	19	60	0.5	3033-311	
V-711		ER11	M12	M12X1.75P	19	100	0.6	3033-312	
V-712		ER11M	M12	M12X1.75P	16	100	0.9	3033-313	
V-713		ER16	M12	M12X1.75P	28	100	0.8	3033-314	
V-714		ER16M	M12	M12X1.75P	22	100	0.7	3033-315	
V-715		ER20	M12	M12X1.75P	34	60	0.6	3033-316	
V-716		ER20	M12	M12X1.75P	34	100	0.9	3033-317	
V-717		ER20M	M12	M12X1.75P	28	100	0.9	3033-318	
V-718		ER25	M12	M12X1.75P	42	60	0.7	3033-319	
V-719		ER40	M12	M12X1.75P	63	70	1	3033-320	
V-720		BT40	ER11	M16	M22X11.5P	19	70	1.2	3033-321
V-721			ER11	M16	M22X11.5P	19	100	1.5	3033-322
V-722A			ER11M	M16	M22X11.5P	16	100	1.2	3033-323
V-723A	ER16M		M16	M22X11.5P	22	100	1.3	3033-324	
V-723B	ER16M		M16	M22X11.5P	22	150	1.5	3033-330	
V-724A	ER20M		M16	M22X11.5P	28	100	1.6	3033-325	
V-724B	ER20M		M16	M22X11.5P	28	150	1.6	3033-331	
V-725	ER25		M16	M22X11.5P	42	70	1.3	3033-326	
V-726	ER25		M16	M22X11.5P	42	100	1.6	3033-327	
V-727	ER50		M16	M22X11.5P	78	90	2.2	3033-328	